

Stoney Creek Fishing and Hunting Club

June 26, 2026

meeting Fishing Report

Statewide news:

- **NEW:** The Maryland Department of Natural Resources (DNR) is giving away 100 free Chesapeake Bay blue catfish charter or guided fishing trips valued at up to \$1,500 each.
<https://news.maryland.gov/dnr/2026/06/24/maryland-department-of-natural-resources-new-giveaway-offers-chance-to-win-free-blue-catfish-charter-fishing-trip/>
- **New:** Daily Recreational Male Hard Crab Catch and Possession Limits for Boats effective July 1, 2026 through June 2027. **Attached at end of report.**
https://dnr.maryland.gov/fisheries/Documents/Public_Notices/PN_RecCatchLimits_2026-27_Effective7-1-2026.pdf
- **Free Fishing Dates:** All state residents and visitors can fish without needing a fishing license, trout stamp, or registration July 4th in any tidal and nontidal waters of Maryland. *Clink link to [Read more](#).*

Bay Forecast / Fishing Report

Chesapeake Bay Forecast Summary:

- Main Bay surface and river mouth water temperatures are now in the upper 70s. Smaller rivers and streams temperatures are holding in the mid -70s.
- *Detailed & up-to-date fishing conditions in your area, refer to checking out Eyes on the Bay's*
 - <https://eyesonthebay.dnr.maryland.gov/eyesonthebay/clickbeforecast.cfm>

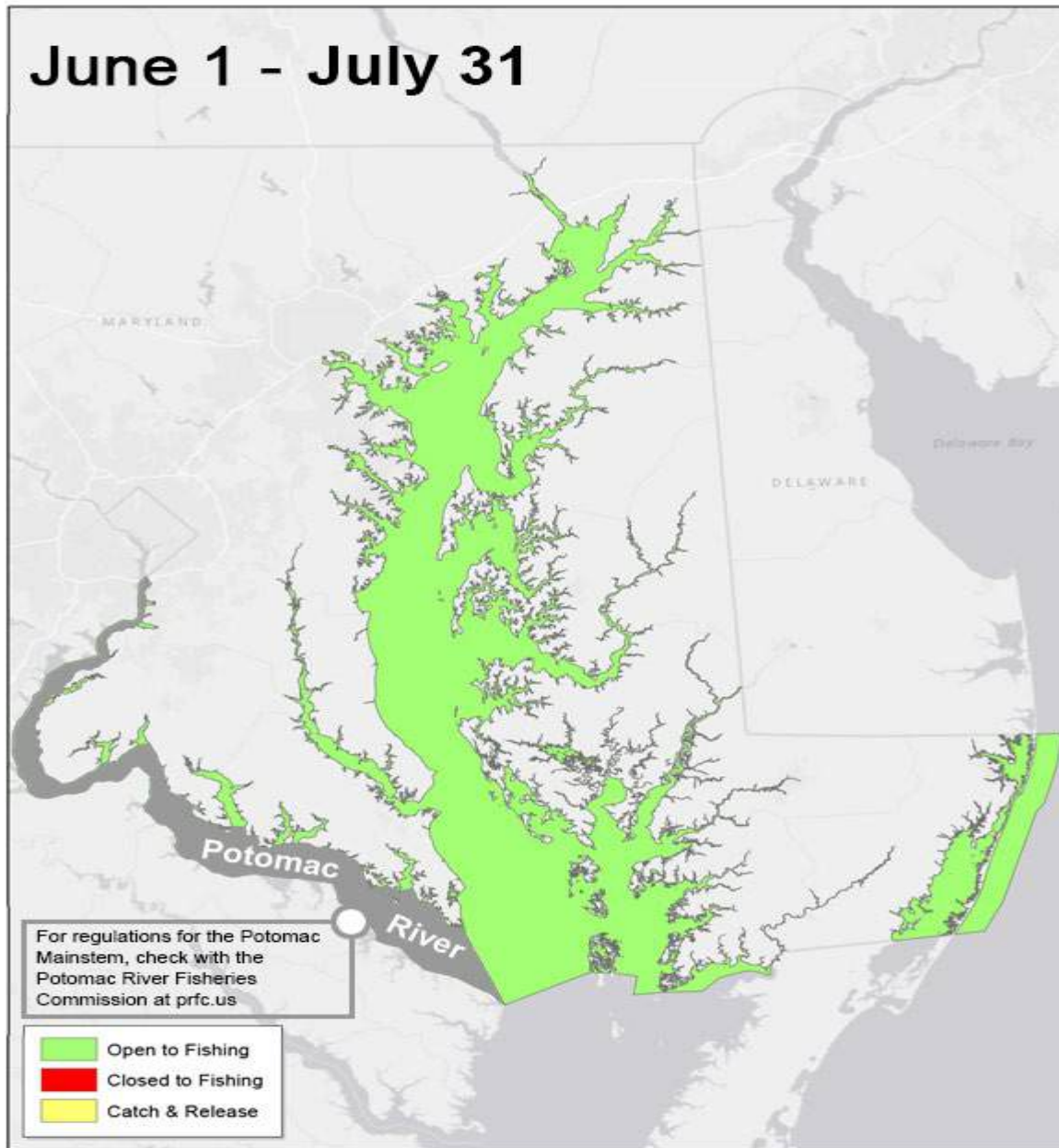
Upper/Middle Chesapeake Bay

Rock Fish: The 2026 striped bass *HARVEST season* opens May 1 thru July 31, 2026. Refer to map.

- The Conowingo Dam Pool and the lower Susquehanna River continue to be a draw for upper bay anglers this week. A mix of striped bass, flathead and blue catfish are being caught by casting and drifting cut bait near the turbine wash area.
 - Anglers are casting a mix of [topwater lures](#), [crankbaits](#) and [paddletails](#) in the dam pool and lower Susquehanna River and catching striped bass and Chesapeake Channa.
 - The same mix is being caught along the edges of the flats during the early morning and late evening hours.
- The Bay Bridge piers are a popular location to cast soft plastic [jigs](#) near the pier bases this week.
 - Anglers are anchoring up-current and drifting live spot, cut bait, or soft crab baits back to the pier bases.
 - ***Circle hooks are a must, and eel baits – live or cut – are not allowed.***
 - Rules regarding the use of Circle Hooks:
<https://dnr.maryland.gov/fisheries/pages/recreational/circle-hooks.aspx>
- The Kent Narrows continues to be a good place to live line spot or [jig](#) for striped bass this week.
 - Trolling along the edges of the main channels is always a popular tactic, but the shallower waters should not be overlooked. Trolling bucktails with sassy shads in chartreuse is very popular and jigging with 6-inch soft plastic jigs.
- **Rockfish:** Starting Monday June 1, fishing for striped bass will get a lot easier to understand when all waters of Maryland's portion of the **Chesapeake Bay and tidal rivers will open to striped bass fishing until July 31.**
 - A 19-inch to 24-inch slot will still be in effect, with a one fish per day limit for anglers.
 - Website link: <https://news.maryland.gov/dnr/2026/03/12/maryland-set-to-adopt-changes-to-chesapeake-bay-recreational-striped-bass-season/>

- **DNR Link to Rockfish Open/Closed areas map:**

- [https://dnr.maryland.gov/fisheries/SiteAssets/Pages/sb_reg_maps/StripedBassR
egs06-01_07-31_2026.jpg](https://dnr.maryland.gov/fisheries/SiteAssets/Pages/sb_reg_maps/StripedBassRegs06-01_07-31_2026.jpg)



DNR Link to above map:

https://dnr.maryland.gov/fisheries/SiteAssets/Pages/sb_reg_maps/StripedBassRegs06-01_07-31_2026.jpg

Rules regarding the use of Circle Hooks:

https://dnr.maryland.gov/fisheries/pages/recreational/circle_hooks.aspx

Upper/Middle Chesapeake Bay - continue

White Perch and Yellow Perch:

- **White Perch** can be found near structure such as submerged rocks, old piers, docks, bulkheads, and oyster bars near the mouths of the region's tidal rivers.
 - The Chester, Sassafras, Bush, Gunpower, and Magothy rivers are good places to look for spawning runs of white perch.
 - Small jig heads in the 1/16 to 1/8 size range tipped with a grass shrimp, lip-hooked minnow, or a piece of bloodworm are a very popular way to fish for white perch.

Blue Catfish:

- Blue catfish can be found in all the region's tidal rivers and out in the Bay south to the Bay Bridge (Sandy Point).
 - The largest blue cats can be found at the mouth of the Susquehanna River and Conowingo Dam pool, the lower Chester River, and out in the Bay.
 - Larger female blue catfish are still spawning; they are being caught as are the smaller male catfish.
- The point that locals call "the rip" at Sandy Point State Park is an excellent spot to fish for blue catfish with medium duty surf fishing gear.
 - Various cut baits, chicken pieces and especially scented baits work very well on [fish finder rigs](#) and [circle hooks](#).

Snake Head/Chesapeake Channa:

- The waters in the upper sections of the tidal rivers and tidal creeks are warming, and anglers are starting to catch Chesapeake Channa (northern snakeheads) in the afternoon hours on the sunny shorelines where waters are warmer.
 - White [paddletails](#) and frogs are the most popular lure to cast.
 - Large minnows under a [popping cork or bobber](#) are also an excellent choice.

Freshwater news:

NEW - Maryland Freshwater Hot Spots link:

<https://dnr.maryland.gov/fisheries/pages/hotspots/index.aspx>

Maryland's spring [trout stocking](#) season is now complete and DNR web-link below.

- <https://dnr.maryland.gov/fisheries/Pages/trout/stocking.aspx>

Chesapeake Channa, aka snakeheads, will also be found in the grass bed areas in tidal waters, and many are beginning to spawn. Noisy and disruptive [topwater lures](#) are a good choice to attract the attention of parent fish who may be protective of eggs or fry balls.

Reservoirs:

- Piney Reservoir revealed that some of the **Saugeye** that were stocked as fingerlings a few years ago have reached sizes of 24" or more.
 - Saugeye is a hybrid (Sauger and Walleye) that are perch-like with both spined fins and sharp teeth.
- Liberty and Triadelphia reservoirs hold true strain walleyes and a wide range of desirable fish species for anglers.

Deep Creek Lake and Potomac River water temperatures are about 60 degrees this week.

- Smallmouth bass and walleye have completed their spawning activities and are active in the upper Potomac River and Deep Creek Lake. Water flows in the upper Potomac River are very low and the water clear. Long casts with light lines will often bring the best results when casting near current breaks and underwater ledges.
- Walleye season opened on April 15 with a minimum size of 15 inches and creel of five per day, with a protected slot of 18-21 inches. The upper Potomac River flows are very low this week, and smallmouth bass are spawning.
- **Link to Eyes on Deep Creek:**
<https://eyesonthebay.dnr.maryland.gov/dcl/DeepCreekLake.cfm>

2026 – Online Fishing Regulations:

https://www.eregulations.com/assets/docs/resources/MD/26MDFW_LR.pdf

- **NEW online licensing link:**
<https://news.maryland.gov/dnr/2025/06/24/new-md-outdoors-licensing-system-now-online/>
- **NEW:** The Maryland Department of Natural Resources has developed a [striped bass habitat conditions](#) mapping tool that uses our newly developed water temperature and dissolved oxygen-based thresholds for Maryland's resident striped bass. *Use Eyes on the Bay for the latest updates.*
 - **Eyes on the Bay:**
<https://eyesonthebay.dnr.maryland.gov/eyesonthebay/StripedBassHabitatConditions.cfm>

Public Access Map: Find Your Perfect Fishing Spot (NEW)

Anglers searching for a new spot should check out the [Public Angler Access Map](#), an interactive map that shows access locations, waterbodies, fish species available, amenities, as well as regulation and license

- Best viewed on desktop, filtering options can help to zero in on what you want to catch and where you can catch it.

NEW online map highlights fishing opportunities for gamefish species in reservoirs, lakes, and ponds with public access.

- <https://dnr.maryland.gov/fisheries/pages/hotspots/index.aspx>

- The traditional [Trout Fishing](#) Opening Day is this **Saturday, March 28.**
 - The [creel limit for trout](#) in these areas (except for brook trout) is a combined five daily harvest and 10 possession.
 - **Go to links for more information.**
- **2026 SPRING trout stocking program** *schedule is out and located on the DNR trout stocking website* – ATTACHED.
 - <https://dnr.maryland.gov/fisheries/pages/trout/stocking.aspx>
 - Over 26K fish have been released over the past two weeks.
 - **Recommend everyone review the latest trout regulations.**
 - **Location opening dates, catch and release and limits.**

- *DNR has introduced a two online links to show lakes and ponds locations/hot spots.*
 - [Freshwater Fisheries Fishing Lakes and Ponds webpage.](#)
 - *The online map highlights fishing opportunities for gamefish species in reservoirs, lakes, and ponds with public access.*
 - <https://dnr.maryland.gov/fisheries/pages/hotspots/index.aspx>
 - [Hotspots:](#)
<https://dnr.maryland.gov/fisheries/pages/hotspots/index.aspx>

Maryland DNR News and Good to Know information:

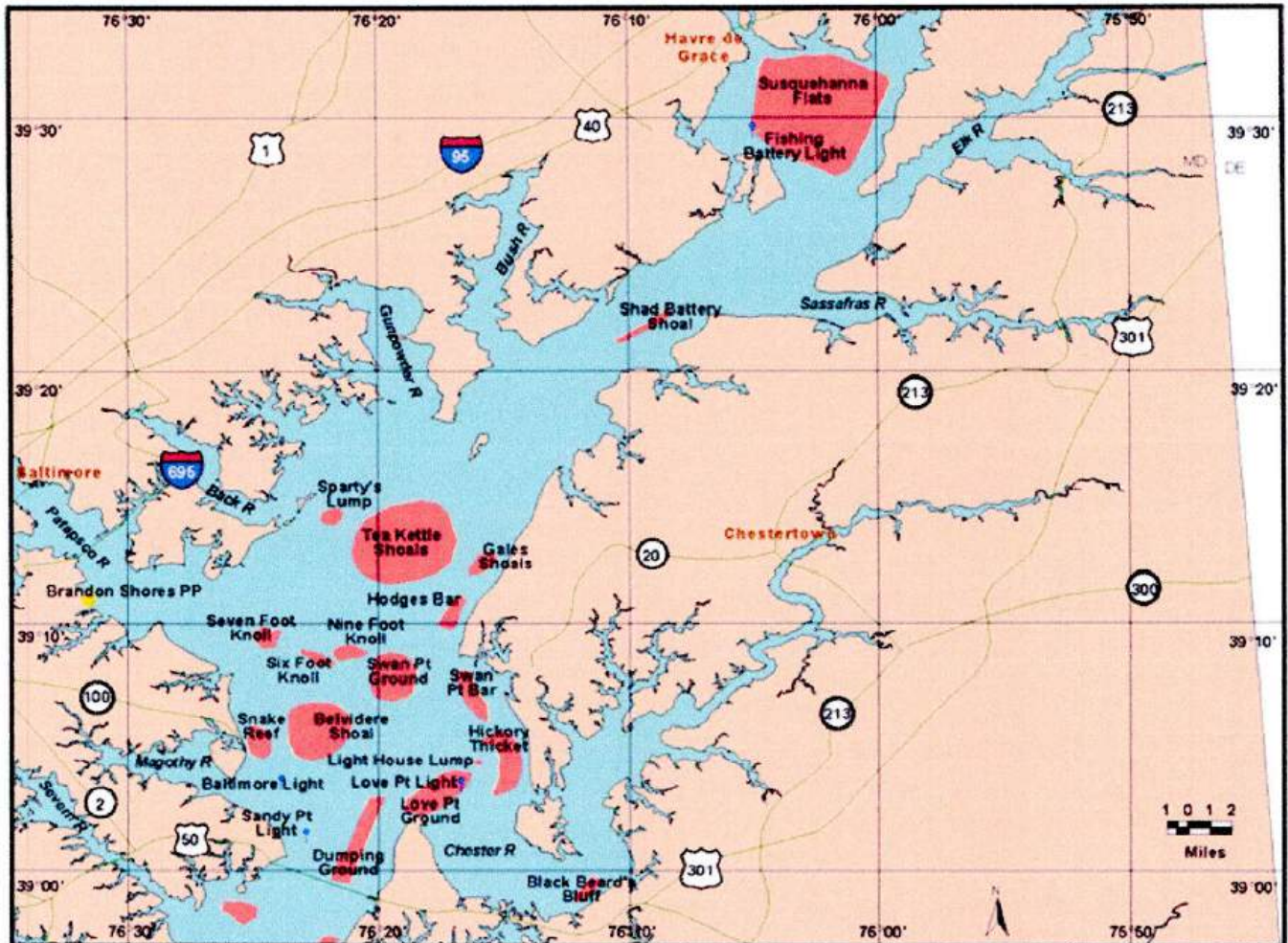
- The Secretary of the [Maryland Department of Natural Resources](#) announces the following seasons, catch limits, size limits and commercial quotas for 2026. These notices will become effective 12:01 a.m. January 1, 2026.
 - [Click each NOTICE below to view the full details, which will open the NOTICE off the DNR website.](#)

Summary of notice notes below

- [2026 Summer Flounder Fishery](#)
 - [2026 Summer Flounder Fishery — Effective 1/1/2026](#)
 - 12:01 a.m. January 1, 2026:
 - The season is open January 1, 2026 – December 31, 2026
 - **RECREATIONAL MINIMUM SIZE**
 - January 1, 2026 – May 31, 2026: 16 inches
 - June 1, 2026 – December 31, 2026: 17-1/2 inches
 - RECREATIONAL CATCH LIMIT
 - 4 fish/person/day
- [2026 Recreational Bluefish Fishery](#)
 - [2026 Recreational Bluefish Fishery — Effective 1/1/2026](#)
 - Effective 12:01 a.m. January 1, 2026:
 - Recreational anglers fishing from shore or private boats can keep up to 5 bluefish per

- person per day.
 - Recreational anglers fishing from for-hire boats can keep up to 7 bluefish per person per day.
 - The minimum size is 8 inches.
 - There is no closed season.
- **2026 Yellow Perch Recreational Catch Limit**
 - **2026 Yellow Perch Recreational Catch Limit – Effective 1/8/2026**
 - Effective 12:01 a.m. January 8, 2026, except for reservoirs, lakes, ponds, impoundments, and waters upstream of them, the recreational daily catch and possession limit for yellow perch is five fish per person per day. This notice supersedes any public notice affecting the yellow perch recreational catch limit issued prior to January 8, 2026.
 - **WHY THIS IS NECESSARYcontinue on next page.**
 - This action is necessary because yellow perch are experiencing a period of low recruitment that has occurred over the last six years. Reducing the harvest of larger females may improve the chance of spawning success. This action for the recreational fishery equitably manages the burden of reduced harvests experienced by the commercial fisheries reduction in quota
- **2026 Recreational Black Sea Bass Fishery**
 - 2026 Recreational Black Sea Bass Fishery — Effective 1/1/2026
 - ***The Secretary of the Maryland Department of Natural Resources announces the recreational season for black sea bass is closed from January 1, 2026 through May 14, 2026.***
 - A subsequent notice will establish the rules for the remainder of the season at a later date.
- **2026 Recreational Cobia Fishery**
 - **026 Recreational Cobia Fishery — Effective 1/1/2026**
 - Effective 12:01 a.m.
 - **January 1, 2026: The season is open June 15, 2026, through September 20, 2026. It is closed all other dates.**
 - • Recreational anglers may keep:
 - 1 cobia per person per day; or

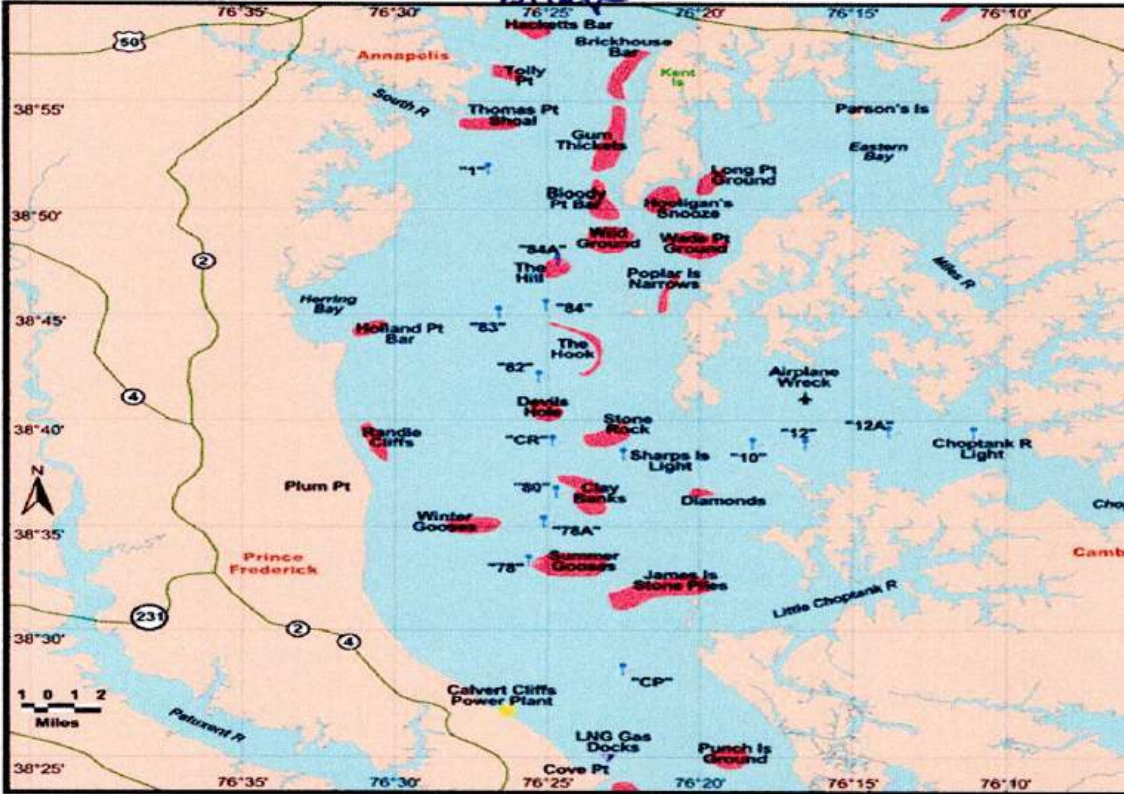
- Up to 2 cobia per vessel per day if there are 2 or more individuals on the vessel.
- The recreational minimum size for cobia is 43 inches total length.



UPPER Bay

Fishing Locations

HWY 50 / Bay Bridge



Middle Bay

○

Fishing Locations

BAITs – Gear - Times

Rock Fish:

- *Jerkbait*s fished along the rocks and Jigging three-to-five-inch soft plastics and straight tails are working well.
- **Jigging three to five inch White and Chartreuse tandems soft plastics are working well.**
- [Live lining spot](#) or [trolling](#) are good.

White Perch:

- Fishing grass shrimp and pieces of bloodworm on a simple bottom rig fished close to a dock, or casting small spinners and soft plastic baits *during the early morning and evening hours along shorelines.*
 - When fishing off docks, a simple bottom rig with a number 2 or 4 hooks, a one-ounce sinker and grass shrimp or pieces of bloodworm for bait.
- Peeler crab has been an excellent bait, but small [spinnerbaits](#) and spin-jigs have also been effective.

Blue Catfish:

- A variety of cut baits work well; white perch, gizzard shad, menhaden, and American eel are excellent baits, but chicken parts and scented baits also work well. *A fish finder rig or sliding sinker rig with a small float in front of a 5/0 to 7/0 circle hook is the most popular rig for fishing blue catfish.*

Snakeheads:

- Casting white paddletails and chatterbaits near emerging grass and shoreline submerged brush is a good tactic. *Often the sunny side of creeks during the afternoon hours is a good place to target fish seeking slightly warmer waters.*

Walleye:

- Casting a mix of swimbaits, flukes and small crankbaits with good results.

Largemouth Bass:

- A mix of spinnerbaits, lipless crankbaits, swimbaits, flukes, and jerkbait are all good choices to use.

Crappie:

- Rigging small minnows or marabou jigs under a slip bobber and fishing close to structure.



Step 8 - Go fishing and catch fish!

Putting it all together

The whole purpose of this process is to help you find the best places to fish.

1. First learn about where your fish live and preferred conditions.
2. Next, pull out your Chesapeake Bay charts and a marker.
3. Now visit your regional websites with current oxygen, salinity, temperature and water clarity conditions.
4. As you move through each step, continue to cross off unsuitable areas on your chart.
5. Now in the remaining areas on your chart, begin highlighting prime habitat.
6. At this point, find moving water by checking your tide charts, wind conditions and flow at these prime areas.

You have now identified the best places to find fish right now, not last week or last month, but **right now**.

The last step, and most fun, is to go fishing and catch a bunch of fish!

And when you do, don't forget to take photos and submit them to the Angler's Log!



Other great fishing resources from Maryland Department of Natural Resources:

- [Fishing Access](#)
- [Boat Ramps / Water Access](#)
- [Fishing Report](#)
- [Angler's Log](#)
- [Fishing License Information](#)
- [Fish Consumption Advisory Map](#)

PUBLIC NOTICE
The Maryland Department of Natural Resources
Fishing and Boating Services

Daily Recreational Catch and Possession Limits for Hard Crabs – July 2026 through June 2027

WHAT THIS NOTICE DOES

The Secretary of the Maryland Department of Natural Resources announces the daily recreational catch and possession limits for male hard crabs in the Chesapeake Bay and its tidal tributaries for July 2026 through June 2027. Effective 12:01 a.m. July 1, 2026, the recreational male hard crab catch and possession limits for individuals on a vessel are:

Daily Recreational Male Hard Crab Catch and Possession Limits for Boats

Unlicensed Boat	With 1 unlicensed individual	2 dozen
	With 2 or more unlicensed individuals	4 dozen
	With 1 or more licensed individuals and any number of unlicensed individuals	1 bushel OR 6 dozen*
Licensed Boat	With any number of licensed or unlicensed individuals	1 bushel OR 6 dozen*

* The recreational catch limit is 1 bushel of crabs if storing crabs in a bushel basket or 6 dozen crabs if using a container other than a bushel basket.

Daily recreational catch and possession limits for male hard crabs are based on the Blue Crab Winter Dredge Survey results, conducted by the Maryland Department of Natural Resources and the Virginia Institute of Marine Science. Catch and possession limits for July through December 2027 will be determined when results from the 2027 Blue Crab Winter Dredge Survey are available.

WHERE THIS NOTICE APPLIES

This applies to recreational crabbing on vessels in the Chesapeake Bay and its tidal tributaries, including the Maryland tributaries of the Potomac River. This change does not affect recreational crabbing from shore in the Chesapeake Bay and its tidal tributaries, nor any recreational crabbing in the Atlantic Ocean, its coastal bays, or tributaries.

WHY THIS IS NECESSARY

This action is necessary to ensure that male blue crab harvest does not exceed the Chesapeake Bay male conservation trigger referenced in Amendment 2 to the Chesapeake Bay Blue Crab Fishery Management Plan.

WHO THIS NOTICE AFFECTS

This applies to recreational crabbers who harvest hard male blue crabs on vessels in the Chesapeake Bay and its tidal tributaries.

AUTHORITY

Code of Maryland Regulations 08.02.03.14G

Josh Kurtz
Secretary of Natural Resources