

April 10, 2026 Highlight/ Summary Report

Statewide news:

- The traditional [Trout Fishing](#) Opening Day is this **Saturday, March 28**.
 - The [creel limit for trout](#) in these areas (except for brook trout) is a combined five daily harvest and 10 possession. **Go to links for more information.**
- **2026 SPRING trout stocking program schedule is out and located on the DNR trout stocking website – ATTACHED.**
- <https://dnr.maryland.gov/fisheries/pages/trout/stocking.aspx>
 - ***Click each NOTICE below to view the full details, which will open the NOTICE off the DNR website.***

Rock Fish:

- **The 2026 striped bass season opens January 1–April 30: *Catch and Release in the bay only, everywhere else is CLOSED.***

White Perch and Yellow Perch:

- They can be found in the upper sections of many of the region's tidal rivers as the water temperature moves into the 50's.
 - The Chester, Bush, Gunpower, and Magothy rivers are good places to look for spawning runs of white perch.

Blue Catfish:

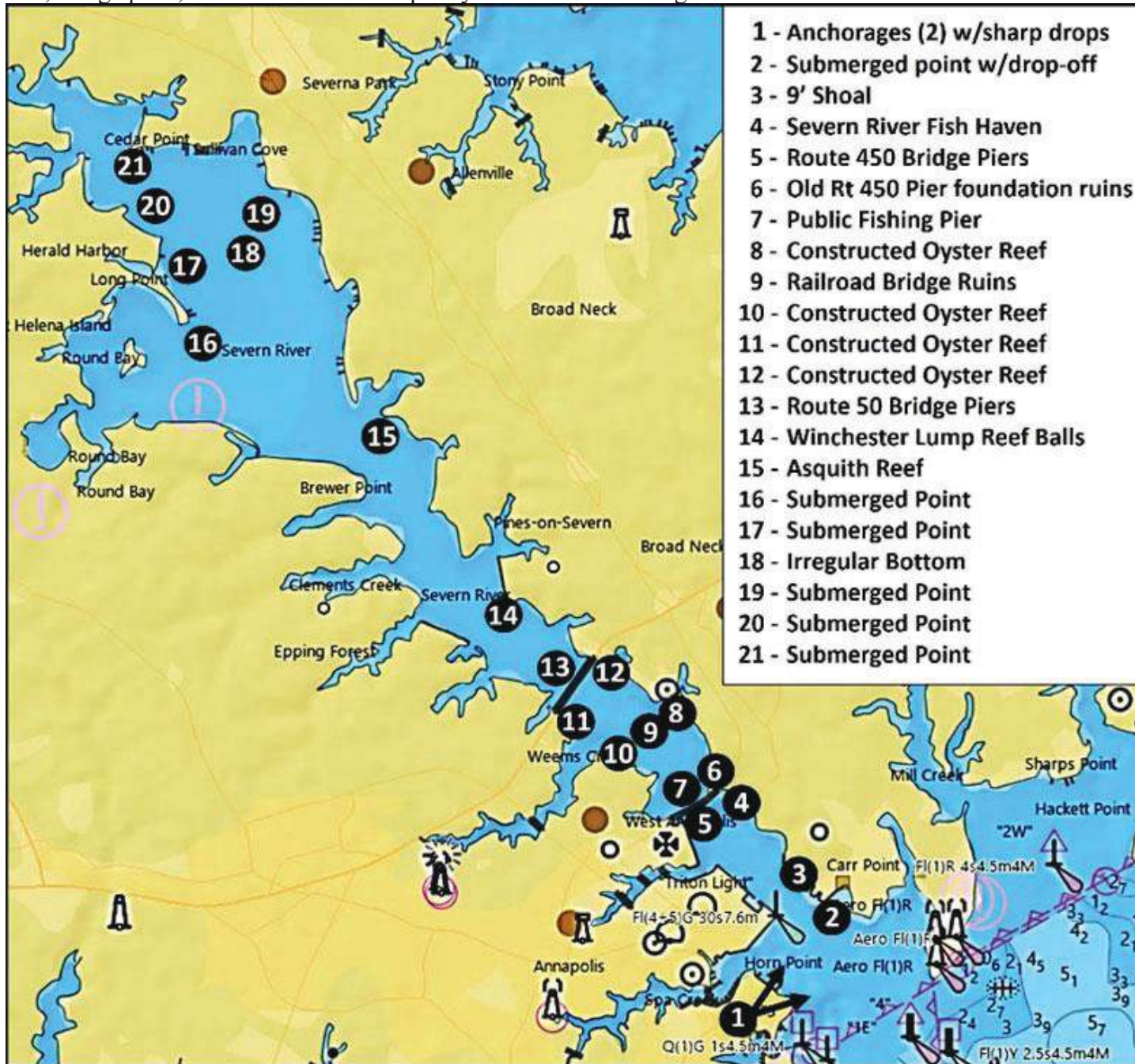
- The largest blue cats can be found at the mouth of the Susquehanna River and Conowingo Dam pool, the lower Chester River, and out in the Bay.

Freshwater:

- **Crappie and Bass are active.**
 - Check the website link in the main report.

Severn River Fishing Spots

The Severn River offers sheltered waters with extensive structure and lots of fishing opportunity for days when going out to open Bay hotspots like the [Bay Bridge](#) or [Thomas Point](#) is a no-go. Much of this structure consists of oyster reef restoration projects that were constructed over the past decade. This structure is in addition to road and railroad bridge foundation ruins, an artificial reef, bridge piers, and a reef ball water quality field test and fishing reef.

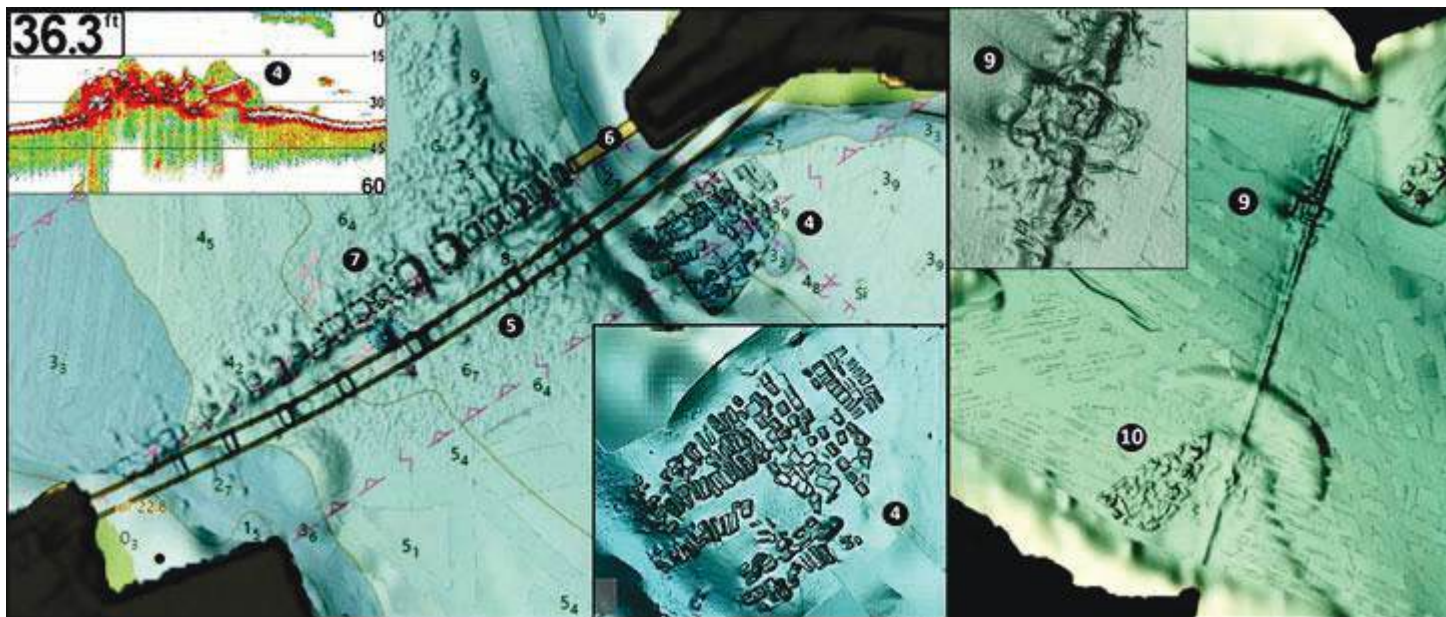


This chart for Severn River fishing hotspots has lots and lots for anglers to work with.

Working from Annapolis upriver, there are two deepwater anchorages (Site 1), one at the mouth of Back Creek and Annapolis Harbor South Anchorage Area at the entrance to Spa Creek. The latter has four large rectangular excavations with drop-offs from about five to nine feet around their perimeters. When the area isn't heavily populated by sailboats, note that the outer edges of the dredged anchorages have drop-offs of between about 10' up to about 40' along the perimeters. In particular, the southeast side of the submerged end of the Horn Point shelf has about a 10' drop-off that's worth a look on an ebb tide.

Site 2 marks a submerged point at the entrance to a small boat basin on the north side of the river across from Spa Creek. It juts out sharply into the ebb current flow and has about a 10' drop-off. A small hump on a shelf just upriver at Site 3 is more substantial than charted. It's about 60 yards long with a five foot drop-off on the northeast side and a 10' drop-off on the southwest side.

Turning the corner and heading upriver from Spa Creek, the river bottom quickly gets very interesting. Between the Route 50 and Route 450 Bridges (Chart 2) features a state reef, the foundation ruins of the first Route 450 Bridge, a public fishing pier, ruins of an old railroad bridge, and constructed oyster reefs supporting ongoing oyster restoration initiatives. These various bottom features also provide lots of recreational fishing opportunity.

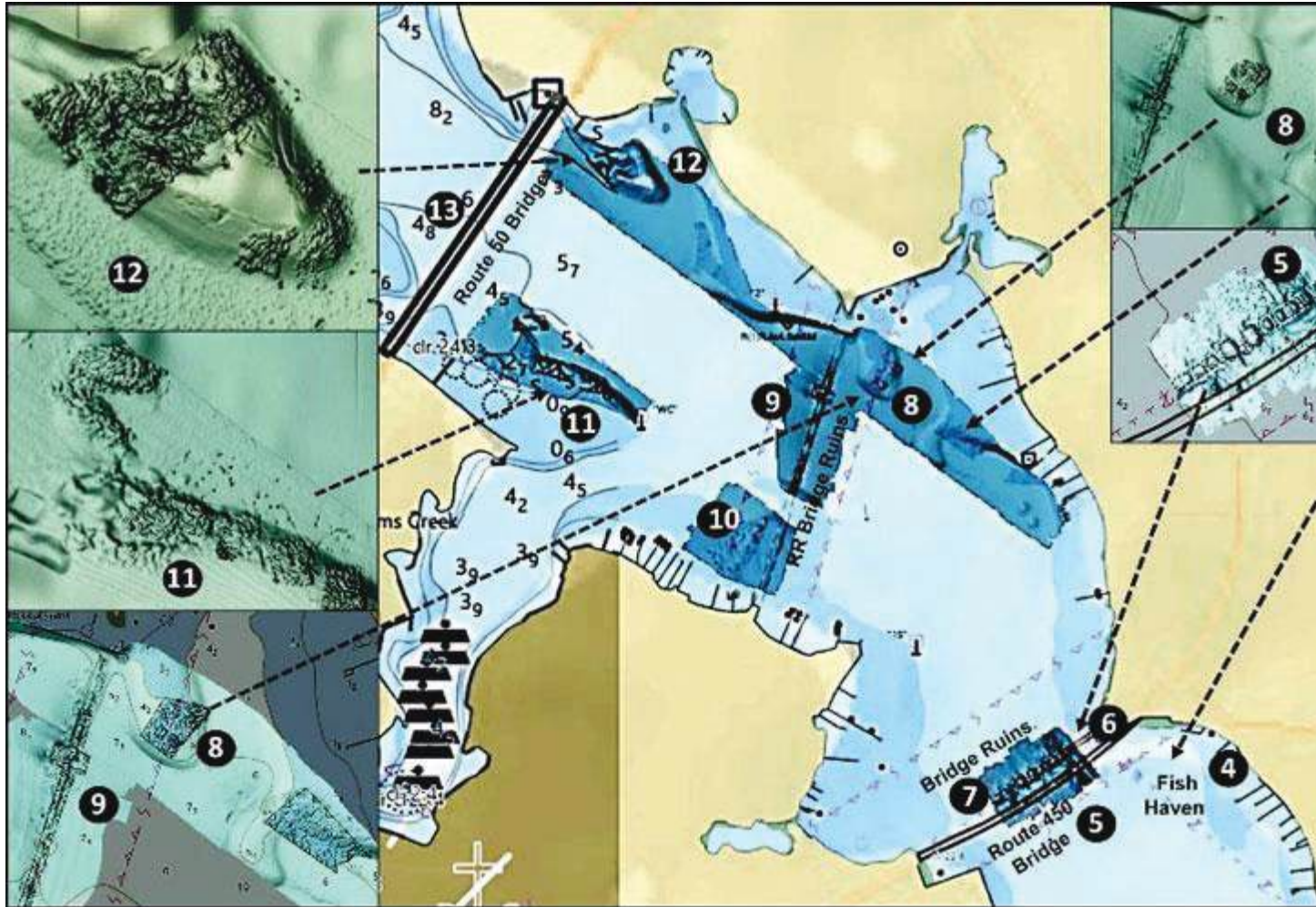


Old Route 450 and railroad bridge ruins. BAG screenshots from NOAA Bathymetric Data Viewer. Fishfinder scan by Author.

Oyster restoration was one of the early objectives for Maryland's artificial reef program. Perhaps this explains why the Severn River State Reef was shown on nautical charts (Site 4) as an oyster reef (sometimes oyster bed) rather than as a fish haven. It was permitted in 1994 to receive rubble from demolition of the old Route 450 Bridge (Site 5). Tucked alongside the Route 450 Bridge, the reef site has little room for maneuvering. Access from the upriver side of the bridge is constrained by bridge piers and a restricted area that is closed to boats. Boats are required to stay out of the area marked by white and orange buoys in front of the northeast end of the old

450 bridge, which is now a recreational fishing pier (Site 6). However, foundation ruins of the old bridge extend all the way across the river (Site 7). This is a sheltered area when northeasterly winds are blowing, but fishing here can be tough due to snags, and drift fishing is nearly impossible.

Site 8 on the northeast side of the river just below the railroad bridge ruins (Site 9) is a constructed oyster reef. The substrate for the reef was placed on top of a submerged point. Just to the southeast is another submerged point. Between them is a trench. Try working across the entire site.



Fishing structures between Route 50 and 450 bridges. BAG inserts from NOAA Bathymetric Data Viewer.

Before the extensive highway system folks coming down to Annapolis from Baltimore and surrounding areas often came by train, over the old Baltimore and Annapolis Railroad Bridge. Its foundation ruins are located about halfway between the Route 450 and Route 50 bridges. The charted ruins extend across the river. This is a fishing hotspot generally, and the former swing span turntable in particular. Try here for [striped bass](#). Site 10 on the upriver side of the ruins

along the southwestern shoreline is another constructed oyster reef that's a good possibility for white perch.

There are five constructed oyster reefs charted downriver from the Route 50 Bridge. Site 11 on the southwest side parallels the shoreline for about 125 yards along the northeast edge of a shelf. A smaller semi-circular constructed reef juts from its northwest end. This reef's position and shape should disrupt current flow and create turbulence. Site 12 marks three constructed oyster reefs on the northeastern side of the river. The southernmost reef on the western edge of a shelf that angles out into the river puts this reef in position to receive ebb current flow. Site 13 is the Route 50 Bridge. Try a test jig or two at the bridge piers for stripers.

Site 14 on Winchester Lump, although another constructed reef, is substantially different from the aforementioned reefs consisting of substrates placed as a bed for seeding with oyster spat on shell. Located just below the south-side entrance to Chase Creek, it consists of 240 reef balls with hatchery-set oyster spat. They're distributed across the site in small clusters (Chart 4). The reef is a field experiment to test whether such reefs can break up dead zones of low oxygen. The reef balls were deployed by the Chesapeake Bay Foundation (CBF) during 2018 in partnership with the University of Maryland Center for Environmental Science (UMCES), and the Naval Academy monitoring performance. Check here for [perch](#) and stripers.

Site 15 marks Asquith Reef located off the mouth of Asquith Creek, on the northeastern side of the river. The project was a partnership effort with CBF, Maryland Artificial Reef Initiative (MARI), and Maryland Department of Natural Resources (MDNR). The base material is composed of 5063 tons of recycled and crushed concrete rubble from bridge decking. This substrate was overseeded with oyster shell and oyster spat on shell.

Structure further up the river consists of natural formations, primarily submerged extensions of points. However, there is a wide area of holes and narrow trenches marked in general as Site 18 east southeast of Kyle Point and from there upriver about 3,000 yards. The trenches and holes are widely distributed and as much as 10' deeper than the surrounding bottom. My impression from various sonar data displays is that they're excavations, possibly from relic oyster shell mining. Regardless of how they got there, these are features to prospect. The larger of the features are between Kyle Point and Round Bay. Try the 34' least depth deep trench at coordinates 39°03.116 x 76°33.074. And don't forget to check the point and the sharp edge on the west side of Round Bay at Site 19. The upper Severn River and its feeder creeks are winter pickerel fishing destinations.

Bay tributaries are akin to large tidal lakes which often offer sheltered waters when the main stem is too rough to fish. The Severn River is one of the more diverse in terms of the structure available for prospecting. There's also a public boat ramp up Spa Creek at Truxton Park in Annapolis, which provides a well-protected launching area with modest parking for vehicles with boat trailers

Stoney Creek Fishing and Hunting Club

April 10, 2026

meeting Fishing Report

Statewide news:

- **Yellow Perch Recreational Limit:**

- **Statement of Purpose:** The purpose of this action is to reduce the recreational catch limit and clarify rules for yellow perch. The proposed action reduces the daily catch and possession limit of yellow perch from ten fish to five fish per person in all tidal waters and in streams and rivers in nontidal waters.

- **Rockfish 2026 Season for recreational in the Chesapeake Bay will be:**

- **January 1–April 30: Catch and Release**
- May 1–July 31: Harvest
- August 1–31: Closed
- September 1–December 5: Harvest
- December 6–31: Catch and Release
- Website link: <https://news.maryland.gov/dnr/2026/03/12/maryland-set-to-adopt-changes-to-chesapeake-bay-recreational-striped-bass-season/>

- **2026 – Online Fishing Regulations:**

https://www.eregulations.com/assets/docs/resources/MD/26MDFW_LR.pdf

- **NEW online licensing link:** <https://news.maryland.gov/dnr/2025/06/24/new-md-outdoors-licensing-system-now-online/>

- **NEW:** The Maryland Department of Natural Resources has developed a [striped bass habitat conditions](#) mapping tool that uses our newly developed water temperature and dissolved oxygen-based thresholds for Maryland’s resident striped bass. *Use Eyes on the Bay for the latest updates.*

- **Eyes on the Bay:**

<https://eyesonthebay.dnr.maryland.gov/eyesonthebay/StripedBassHabitatConditions.cfm>

Chesapeake Bay Forecast Summary:

- Main Bay surface and river mouth water temperatures are now in the low to mid 50s. Smaller rivers and streams temperatures are holding in the upper 40s to low 50s.
- *Detailed & up-to-date fishing conditions in your area, refer to checking out Eyes on the Bay's*
 - <https://eyesonthebay.dnr.maryland.gov/eyesonthebay/clickbeforecast.cfm>

Upper/Middle Chesapeake Bay

Rock Fish: The 2026 striped bass season opens January 1–April 30: Catch and Release in the bay only, everywhere else is CLOSED. Refer to map on next page.

- *Catch-and-release striped bass anglers are trolling* large tandem rigged bucktail and sassy shads with good luck in the upper bay region this week.
- *The channel edges* often hold the most promise and locating schools of menhaden can hold the key to success. *Jigging* with large soft plastic jigs is also a popular way to fish.

White Perch and Yellow Perch:

- **White Perch** can be found in the upper sections of many of the region's tidal rivers.
 - The Chester, Sassafras, Bush, Gunpower, and Magothy rivers are good places to look for spawning runs of white perch.
 - Small jig heads in the 1/16 to 1/8 size range tipped with a grass shrimp, lip-hooked minnow, or a piece of bloodworm are a very popular way to fish for white perch.
- **Yellow perch** are now moving into the upper sections of several of the region's tidal rivers and should start to spawn when the water temperature reaches the upper 50's.
 - The Bush, Northeast, Sassafras, Chester, and Magothy rivers are good locations to fish right now.
 - Fishing in shallower, more confined waters, lip-hooked minnows, Beetle-spins, small jigs, and shad darts tipped with grass shrimp or a small minnow or piece of a minnow will work well when worked slowly close to the bottom. +
 - Deeper waters will require bottom rigs baited with lip-hooked minnows or grass shrimp.

Blue Catfish:

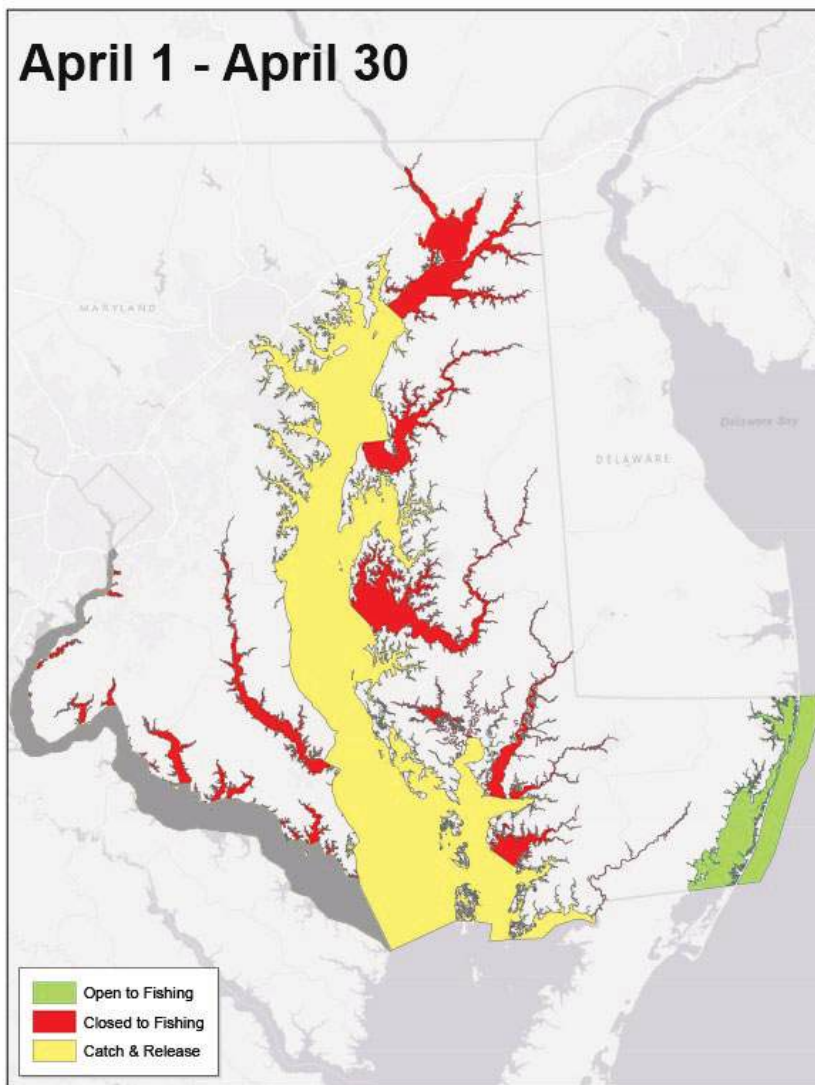
- Blue catfish can be found in all the region's tidal rivers and out in the Bay south to the Bay Bridge.
- The largest blue cats can be found at the mouth of the Susquehanna River and Conowingo Dam pool, the lower Chester River, and out in the Bay.

- The point that locals call “the rip” at Sandy Point State Park is an excellent spot to fish for blue catfish with medium duty surf fishing gear.
 - Various cut baits, chicken pieces and especially scented baits work very well on [fish finder rigs](#) and [circle hooks](#).

Snake Head/Chesapeake Channa:

- The waters in the upper sections of the tidal rivers and tidal creeks are warming, and anglers are starting to catch Chesapeake Channa (northern snakeheads) in the afternoon hours on the sunny shorelines where waters are warmer.
 - White [paddletails](#) are the most popular lure to cast and large minnows under a [popping cork or bobber](#) are also an excellent choice.

Rock Fish fishing areas that are current open for Catch and Release ONLY and CLOSED.



Freshwater news:

- **Fishing for crappie** continues to be good this month when fishing near deeper submerged structure in the form of sunken brush, fallen treetops, marina docks and bridge piers.
 - The popular choice for them is a small minnow under a slip bobber.
 - Small lures and bladed marabou jigs are fun ways to cover water when searching for crappie.
- ***NEW online map highlights fishing opportunities for gamefish species in reservoirs, lakes, and ponds with public access.***
 - <https://dnr.maryland.gov/fisheries/pages/hotspots/index.aspx>
- The traditional [Trout Fishing](#) Opening Day is this **Saturday, March 28.**
 - The [creel limit for trout](#) in these areas (except for brook trout) is a combined five daily harvest and 10 possession.
 - **Go to links for more information.**
- ***2026 SPRING trout stocking program schedule is out and located on the DNR trout stocking website*** – ATTACHED.
 - <https://dnr.maryland.gov/fisheries/pages/trout/stocking.aspx>
 - Over 26K fish have been released over the past two weeks.
 - **Recommend everyone review the latest trout regulations.**
 - **Location opening dates, catch and release and limits.**
- ***DNR has introduced a two online links to show lakes and ponds locations/hot spots.***
 - [Freshwater Fisheries Fishing Lakes and Ponds webpage.](#)
 - ***The online map highlights fishing opportunities for gamefish species in reservoirs, lakes, and ponds with public access.***
 - <https://dnr.maryland.gov/fisheries/pages/hotspots/index.aspx>
 - **Hotspots:** <https://dnr.maryland.gov/fisheries/pages/hotspots/index.aspx>

Maryland DNR News and Good to Know information:

- The Secretary of the [Maryland Department of Natural Resources](#) announces the following seasons, catch limits, size limits and commercial quotas for 2026. These notices will become effective 12:01 a.m. January 1, 2026.
 - *Click each NOTICE below to view the full details, [which will open the NOTICE off the DNR website.](#)*

Summary of notice notes below

- [2026 Summer Flounder Fishery](#)
 - [2026 Summer Flounder Fishery](#) — Effective 1/1/2026
 - 12:01 a.m. January 1, 2026:
 - The season is open January 1, 2026 – December 31, 2026
 - [RECREATIONAL MINIMUM SIZE](#)
 - January 1, 2026 – May 31, 2026: 16 inches
 - June 1, 2026 – December 31, 2026: 17-1/2 inches
 - RECREATIONAL CATCH LIMIT
 - 4 fish/person/day
- [2026 Recreational Bluefish Fishery](#)
 - [2026 Recreational Bluefish Fishery](#) — Effective 1/1/2026
 - Effective 12:01 a.m. January 1, 2026:
 - Recreational anglers fishing from shore or private boats can keep up to 5 bluefish per person per day.
 - Recreational anglers fishing from for-hire boats can keep up to 7 bluefish per person per day.
 - The minimum size is 8 inches.
 - There is no closed season.
- [2026 Yellow Perch Recreational Catch Limit](#)
 - [2026 Yellow Perch Recreational Catch Limit](#) – Effective 1/8/2026
 - Effective 12:01 a.m. January 8,
 - 2026, except for reservoirs, lakes, ponds, impoundments, and waters upstream of them, the recreational daily catch and possession limit for yellow perch is five fish per person per day. This notice supersedes

any public notice affecting the yellow perch recreational catch limit issued prior to January 8, 2026.

○ **WHY THIS IS NECESSARYcontinue on next page.**

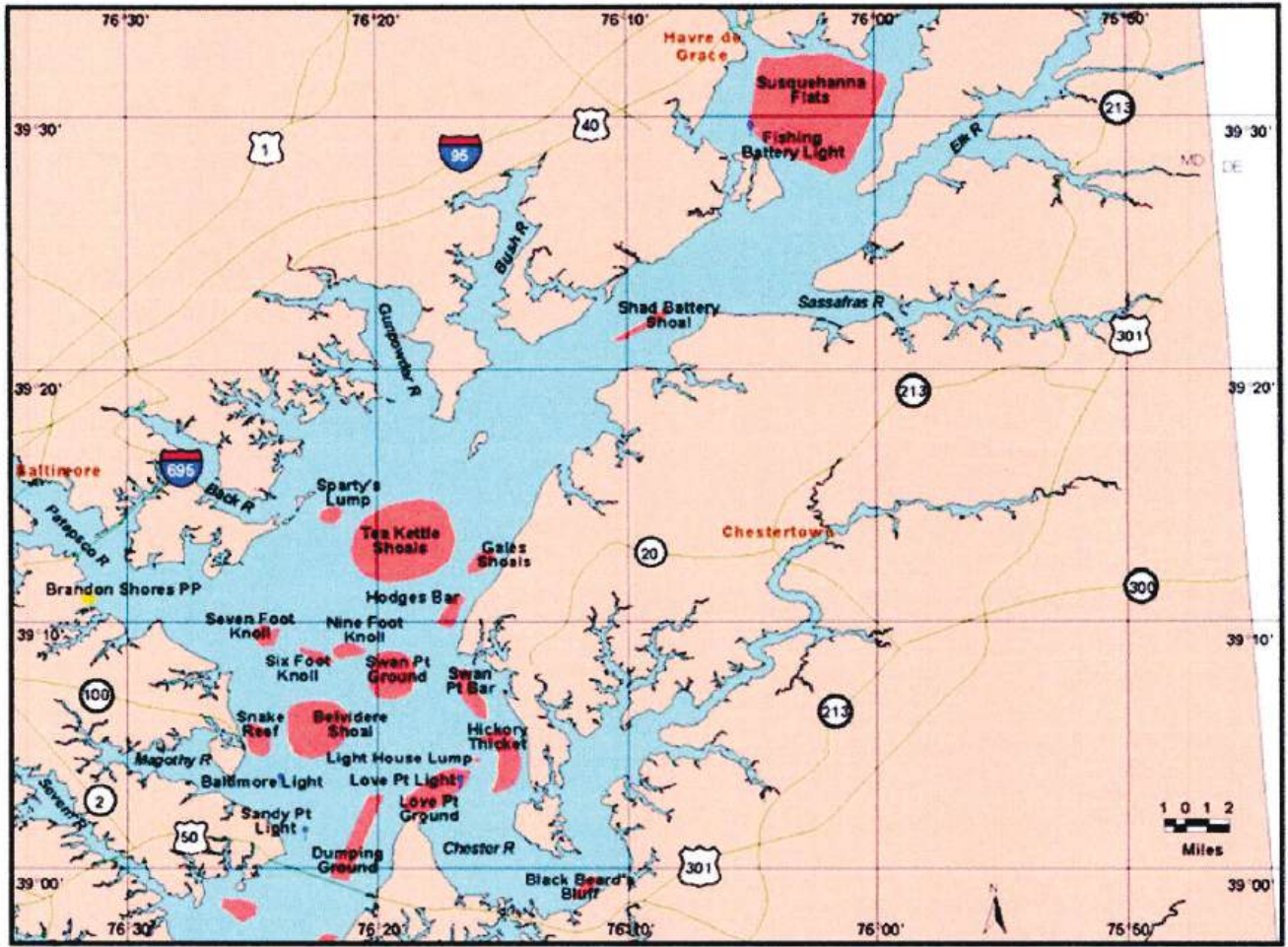
- This action is necessary because yellow perch are experiencing a period of low recruitment that has occurred over the last six years. Reducing the harvest of larger females may improve the chance of spawning success. This action for the recreational fishery equitably manages the burden of reduced harvests experienced by the commercial fisheries reduction in quota

• **2026 Recreational Black Sea Bass Fishery**

- 2026 Recreational Black Sea Bass Fishery — Effective 1/1/2026
- ***The Secretary of the Maryland Department of Natural Resources announces the recreational season for black sea bass is closed from January 1, 2026 through May 14, 2026.***
- A subsequent notice will establish the rules for the remainder of the season at a later date.

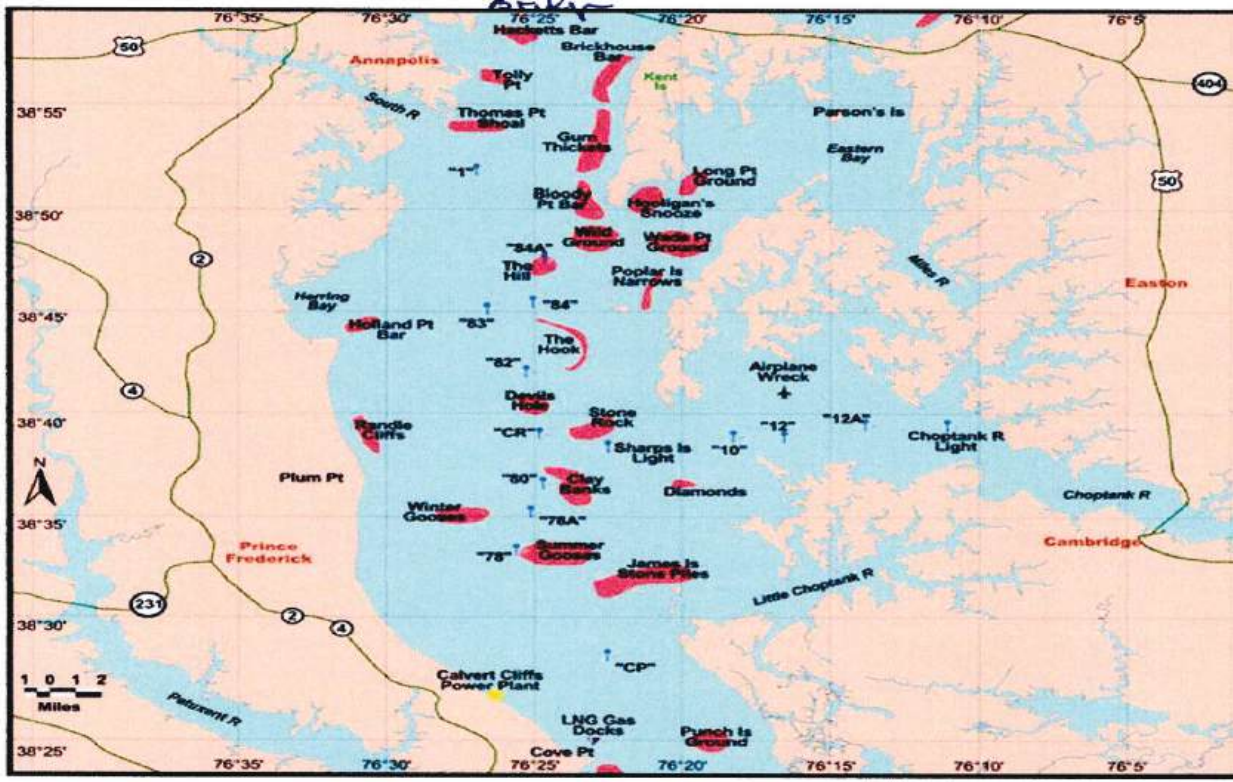
• **2026 Recreational Cobia Fishery**

- **2026 Recreational Cobia Fishery — Effective 1/1/2026**
- Effective 12:01 a.m.
- **January 1, 2026: The season is open June 15, 2026, through September 20, 2026. It is closed all other dates.**
- • Recreational anglers may keep:
 - 1 cobia per person per day; or
 - Up to 2 cobia per vessel per day if there are 2 or more individuals on the vessel.
- The recreational minimum size for cobia is 43 inches total length.



Upper Bay

HWY 50 / Bay Bridge



Middle Bay

○

BAITs – Gear - Times

Rock Fish:

- *Jerkbait*s fished along the rocks and Jigging three-to-five-inch soft plastics and straight tails are working well.
- *Jigging three to five inch White and Chartreuse tandems soft plastics are working well.*
- [Live lining spot](#) or [trolling](#) are good.

White Perch:

- Fishing grass shrimp and pieces of bloodworm on a simple bottom rig fished close to a dock, or casting small spinners and soft plastic baits *during the early morning and evening hours along shorelines.*
 - When fishing off docks, a simple bottom rig with a number 2 or 4 hooks, a one-ounce sinker and grass shrimp or pieces of bloodworm for bait.
- Peeler crab has been an excellent bait, but small [spinnerbaits](#) and spin-jigs have also been effective.

Blue Catfish:

- A variety of cut baits work well; white perch, gizzard shad, menhaden, and American eel are excellent baits, but chicken parts and scented baits also work well. *A fish finder rig or sliding sinker rig with a small float in front of a 5/0 to 7/0 circle hook is the most popular rig for fishing blue catfish.*

Snakeheads:

- Casting white paddletails and chatterbaits near emerging grass and shoreline submerged brush is a good tactic. *Often the sunny side of creeks during the afternoon hours is a good place to target fish seeking slightly warmer waters.*

Walleye:

- Casting a mix of swimbaits, flukes and small crankbaits with good results.

Largemouth Bass:

- A mix of spinnerbaits, lipless crankbaits, swimbaits, flukes, and jerkbaits are all good choices to use.

Crappie:

- Rigging small minnows or marabou jigs under a slip bobber and fishing close to structure.



Step 8 - Go fishing and catch fish!

Putting it all together

The whole purpose of this process is to help you find the best places to fish.

1. First learn about where your fish live and preferred conditions.
2. Next, pull out your Chesapeake Bay charts and a marker.
3. Now visit your regional websites with current oxygen, salinity, temperature and water clarity conditions.
4. As you move through each step, continue to cross off unsuitable areas on your chart.
5. Now in the remaining areas on your chart, begin highlighting prime habitat.
6. At this point, find moving water by checking your tide charts, wind conditions and flow at these prime areas.

You have now identified the best places to find fish right now, not last week or last month, but **right now**.

The last step, and most fun, is to go fishing and catch a bunch of fish!

And when you do, don't forget to take photos and submit them to the Angler's Log!



Other great fishing resources from Maryland Department of Natural Resources:

↓ [Fishing Access](#)

↓ [Boat Ramps / Water Access](#)

↓ [Fishing Report](#)

↓ [Angler's Log](#)

↓ [Fishing License Information](#)

↓ [Fish Consumption Advisory Map](#)