

# Stoney Creek Fishing and Hunting Club

## May 30, 2025

### meeting Fishing Report

#### Statewide news:

- No new regulations to report.
  - *The first two Saturdays in June* are [free fishing days](#) where no fishing license is required, so consider taking a friend fishing – it could change their life for the better.

#### Forecast Summary:

- Main Bay surface water temperatures have remained in the 60's and River temperatures are slightly cooler too.
  - *Detailed & up-to-date fishing conditions in your area, refer to check out Eyes on the Bay's*  
<https://eyesonthebay.dnr.maryland.gov/eyesonthebay/clickbeforecast.cfm>

## Upper Chesapeake Bay

#### Rock Fish:

- Opened May 16<sup>th</sup>, recommend Anglers view an interactive [Striped Bass Regulation Map](#) on the Maryland DNR website to see when and where closures take place.
  - *Attached 2025 Striped Bass/Rockfish regulations and current DNR Map.*
  - *Once the season opens, anglers will be allowed to keep one fish per person per day with a slot limit of 19" to 24".*
- The bite has been good in this section of the Bay with the *Patapsco River, Love Point rocks* and around the *former Key Bridge* have been productive.
  - Reports coming in are large schools in the river and there have been several days over the past two weeks when fish have been feeding on bait at the surface.
  - Fish have also been found along shorelines with rip-rap.
    - *Jerkbaits fished along the rocks and Jigging three-to-five-inch soft plastics and straight tails are working well.*
  - *Jigging three to five inch White and Chartreuse tandems soft plastics are working well.*

**White Perch:** Hanging around docks and shorelines especially near down trees.

**Blue Catfish:** The lower Susquehanna, Elk and the middle and upper sections of the Chester River hold some of the greatest populations of blue catfish.

**Snake Head:** Grass beds have thickened up in the Upper Bay tidal rivers and the *spawning will be starting soon.*

- *Once that occurs it can be difficult to entice them to strike a lure.*
- The following areas are prime locations to target northern [snakehead](#).
  - The Bush River, Gunpowder River, Middle River, and Back River are all prime destinations to search for snakeheads.
  - While fishing thick vegetation and marsh shorelines, topwater frogs are excellent lure choices. Areas of open water can be covered by throwing chatterbaits, spinners, and swimbaits.

## Middle Chesapeake Bay

### Rock Fish:

- Opened May 16<sup>th</sup>, recommend Anglers view an interactive [Striped Bass Regulation Map](#) on the Maryland DNR website to see when and where closures take place.
  - *Attached 2025 Striped Bass/Rockfish regulations*
  - *Once the season opens, anglers will be allowed to keep one fish per person per day with a slot limit of 19" to 24".*
- Reports from the [Bay Bridge](#), where anglers caught good numbers of fish (both jigging and [live-lining spot](#) were working).
  - *Live-lining spot and drifting them back towards the bridge pier bases is a good tactic. Drifting soft crab baits back towards the pier bases also works well.*
  - There have been a fair number of over slot fish being caught in this area, and we want to remind anglers that only fish between 19" and 24" can be kept.
    - Anything outside that slot must be released, and it is important to handle these fish with care when catching and releasing them.
- Striped bass anglers are urged to report their catches and fish they release on the [DNR Volunteer Angler Survey](#). The information from anglers is very important to the striped bass program biologists.

### White Perch:

- White perch can now be found residing in their typical summer habitats which usually means some type of structure.
  - Docks and piers fit the bill for this type of structure and the white perch can be found under the docks or close by. In deeper waters oyster bars can be a good place to fish.
  - When fishing off docks, a simple bottom rig with a number 2 or 4 hooks, a one-ounce sinker and grass shrimp or pieces of bloodworm for bait.
  - *A mix of spot and small croaker* can now be found on most hard bottom areas of the middle Bay and the lower sections of the tidal rivers.

- Pieces of bloodworm or artificial bloodworm baits on a bottom rig is the ticket to collecting spot for live-lining bait.

### **Blue Catfish:**

- Bite is still on from Sandy Point all the way down to Solomons.
  - Best fishing on the Choptank River from the town of Choptank to Denton.

### **Crabs:**

- Crabs are on the move but in shorter supply per DNR's reports. Watching and more to come.

## **Fresh water**

- The cooler weather has extended the largemouth bass spawn this spring, and some fish can still be found on beds, though many are moving into post-spawn patterns.
  - Anglers will be able to find them in ponds, lakes and reservoirs where they are holding close to shoreline structures such as fallen trees, aquatic vegetation, and rocks.
- **Good reminder:** DNR has introduced a monitoring database on your favorite freshwater fish species at your preferred fishing spots.
  - A new impoundment mapping tool is available on the [Freshwater Fisheries Fishing Lakes and Ponds webpage](#).
  - The online map highlights fishing opportunities for gamefish species in reservoirs, lakes, and ponds with public access.

### **Walleye:**

- Fishing for a mix of walleye and smallmouth bass is good this week at Deep Creek Lake and the upper Potomac River.
- The upper Potomac River is offering good fishing for the walleye and smallmouth bass this week.
  - Casting a variety of tubes, swimbaits, paddletails, and small crankbaits are a good way to target them along current breaks, mid-river boulders and submerged ledges.

### **Largemouth Bass:**

- Largemouth bass are in a pre-spawn mode of behavior in the ventral, southern, and eastern regions of Maryland and this activity will increase in the next few weeks.

### **Crappie:**

- Crappie are wrapping up their spawning activity and have begun spreading out to deeper structure such as stump fields, docks, bridge pilings, and shorelines with steep rip-rap.

## INFORMATION NOTICE

### Know Your Bass -- PROTECT OUR WATERS FROM INVASIVE FISH

#### The Problem: Alabama Bass

Alabama bass (*Micropterus henshalli*) is an invasive species illegally introduced into several Virginia lakes and rivers. These fish can harm existing largemouth and smallmouth bass populations by outcompeting and reducing overall bass size in fisheries they invade. Luckily, they haven't been found in Maryland yet – and we want to keep it that way!



#### BAITs – Gear - Times

#### White Perch:

- Fishing grass shrimp and pieces of bloodworm on a simple bottom rig fished close to a dock, or casting small spinners and soft plastic baits *during the early morning and evening hours along shorelines.*
  - When fishing off docks, a simple bottom rig with a number 2 or 4 hooks, a one-ounce sinker and grass shrimp or pieces of bloodworm for bait.

### **Blue Catfish:**

- A variety of cut baits work well; white perch, gizzard shad, menhaden, and American eel are excellent baits, but chicken parts and scented baits also work well. *A fish finder rig or sliding sinker rig with a small float in front of a 5/0 to 7/0 circle hook is the most popular rig for fishing blue catfish.*

### **Snakeheads:**

- Casting white paddletails and chatterbaits near emerging grass and shoreline submerged brush is a good tactic. *Often the sunny side of creeks during the afternoon hours is a good place to target fish seeking slightly warmer waters.*

### **Walleye:**

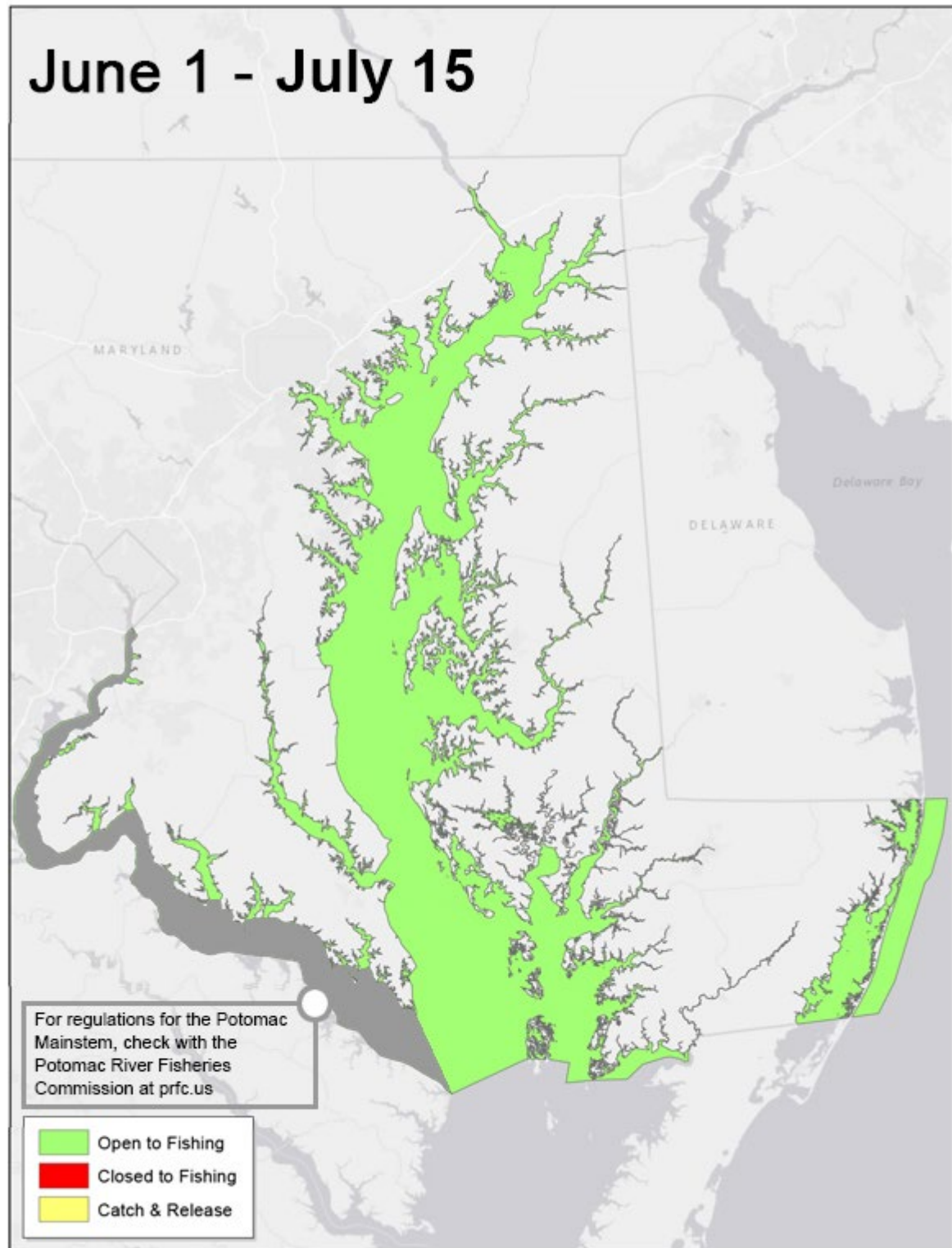
- Casting a mix of swimbaits, flukes and small crankbaits with good results.

### **Largemouth Bass:**

- A mix of spinnerbaits, lipless crankbaits, swimbaits, flukes, and jerkbaits are all good choices to use.

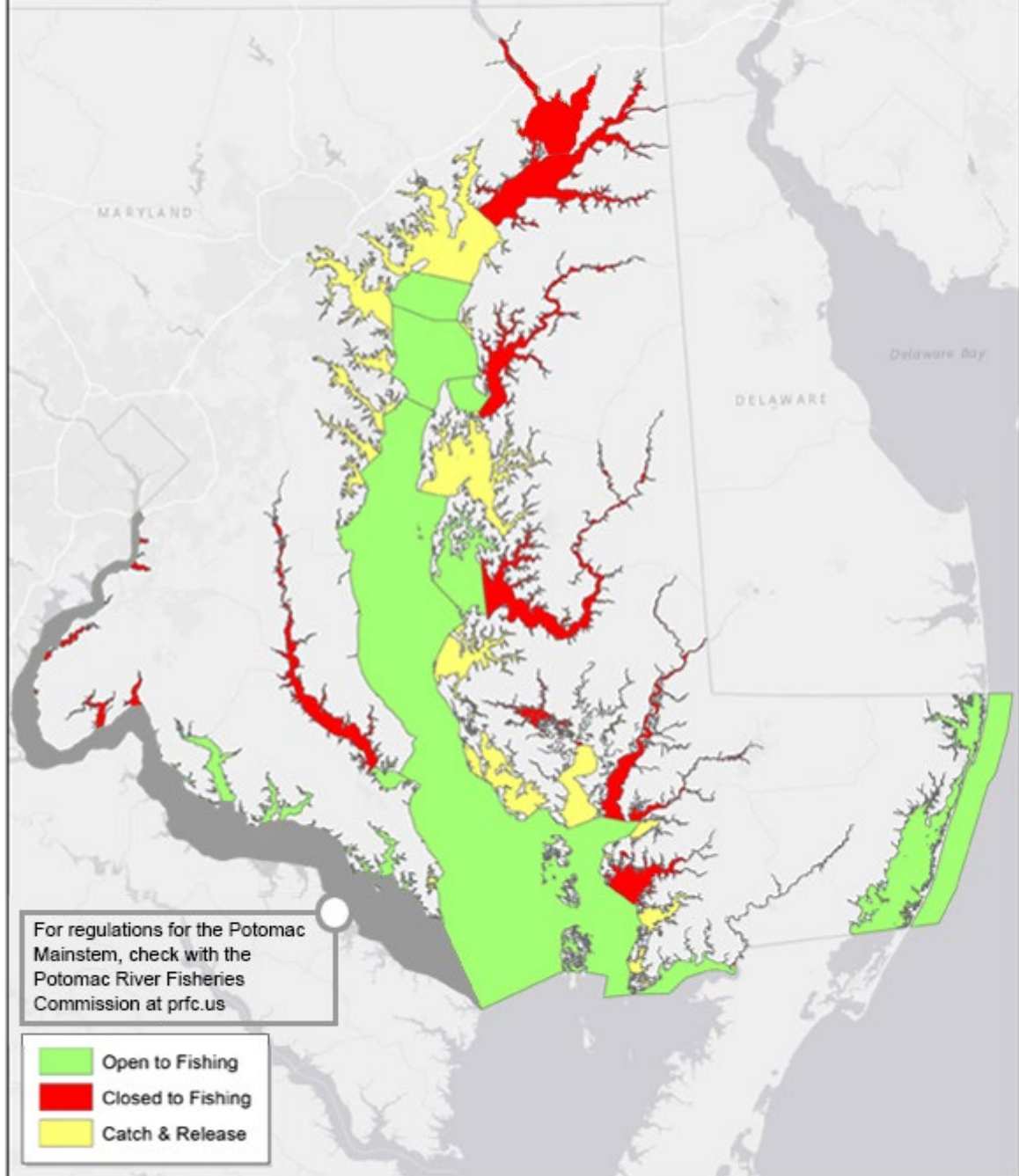
### **Crappie:**

- Rigging small minnows or marabou jigs under a slip bobber and fishing close to structure.





# May 16 - May 31





## Step 8 - Go fishing and catch fish!

### Putting it all together

The whole purpose of this process is to help you find the best places to fish.

1. First learn about where your fish live and preferred conditions.
2. Next, pull out your Chesapeake Bay charts and a marker.
3. Now visit your regional websites with current oxygen, salinity, temperature and water clarity conditions.
4. As you move through each step, continue to cross off unsuitable areas on your chart.
5. Now in the remaining areas on your chart, begin highlighting prime habitat.
6. At this point, find moving water by checking your tide charts, wind conditions and flow at these prime areas.

You have now identified the best places to find fish right now, not last week or last month, but **right now**.

The last step, and most fun, is to go fishing and catch a bunch of fish!

**And when you do, don't forget to take photos and submit them to the Angler's Log!**



Other great fishing resources from Maryland Department of Natural Resources:

- [↵ Fishing Access](#)
- [↵ Boat Ramps / Water Access](#)
- [↵ Fishing Report](#)
- [↵ Angler's Log](#)
- [↵ Fishing License Information](#)
- [↵ Fish Consumption Advisory Map](#)